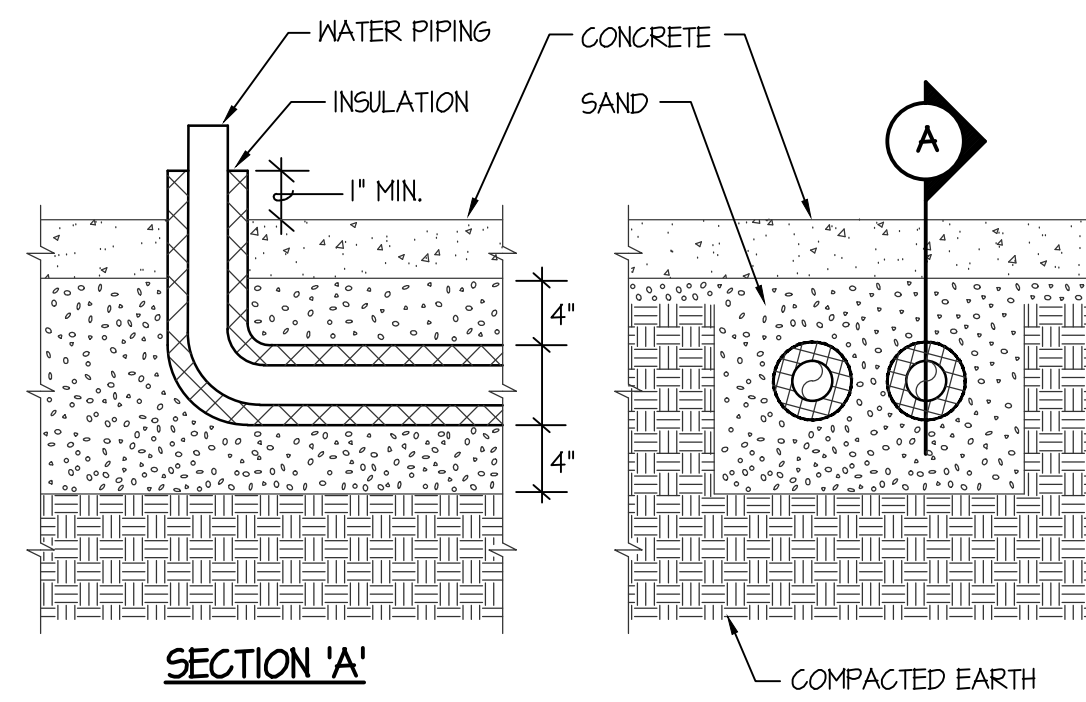
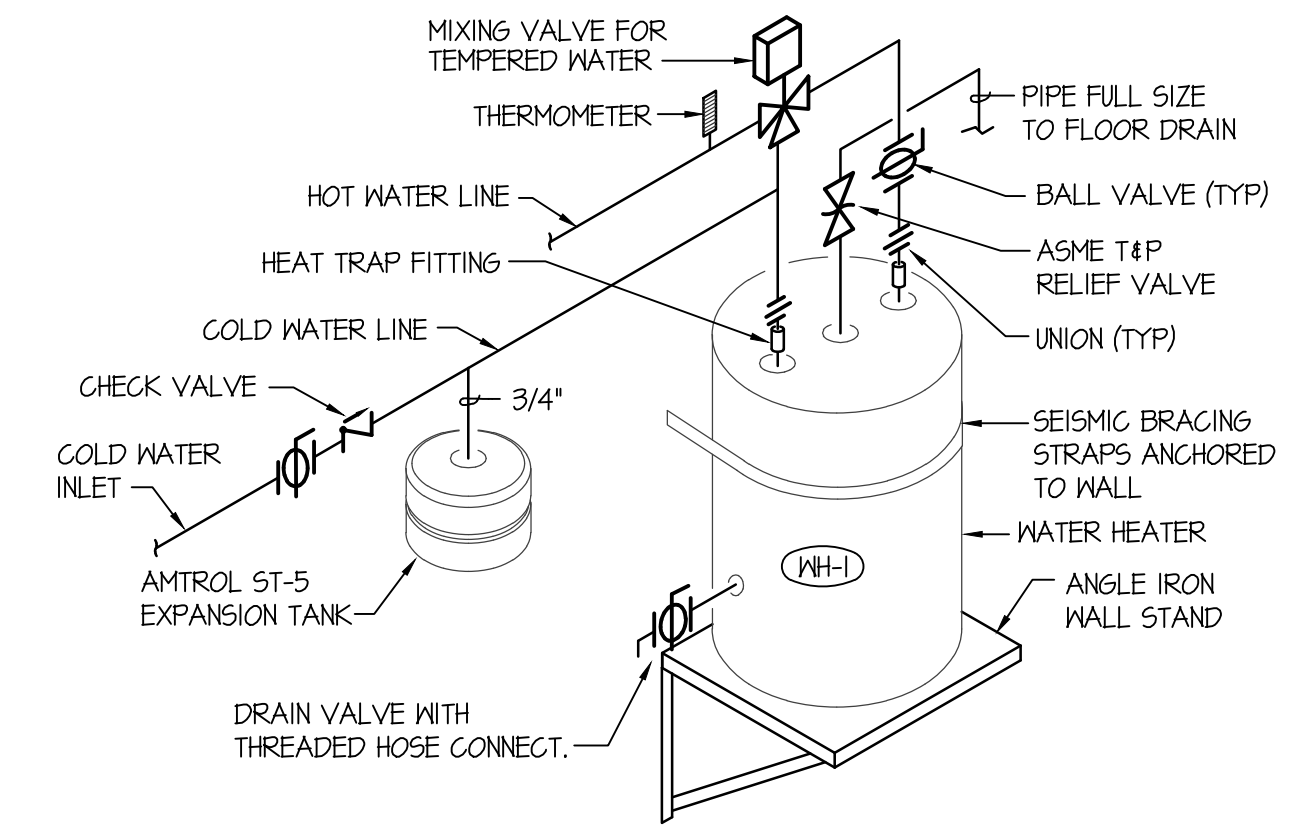


WATER PRESSURE REDUCING STATION DETAIL
NO SCALE

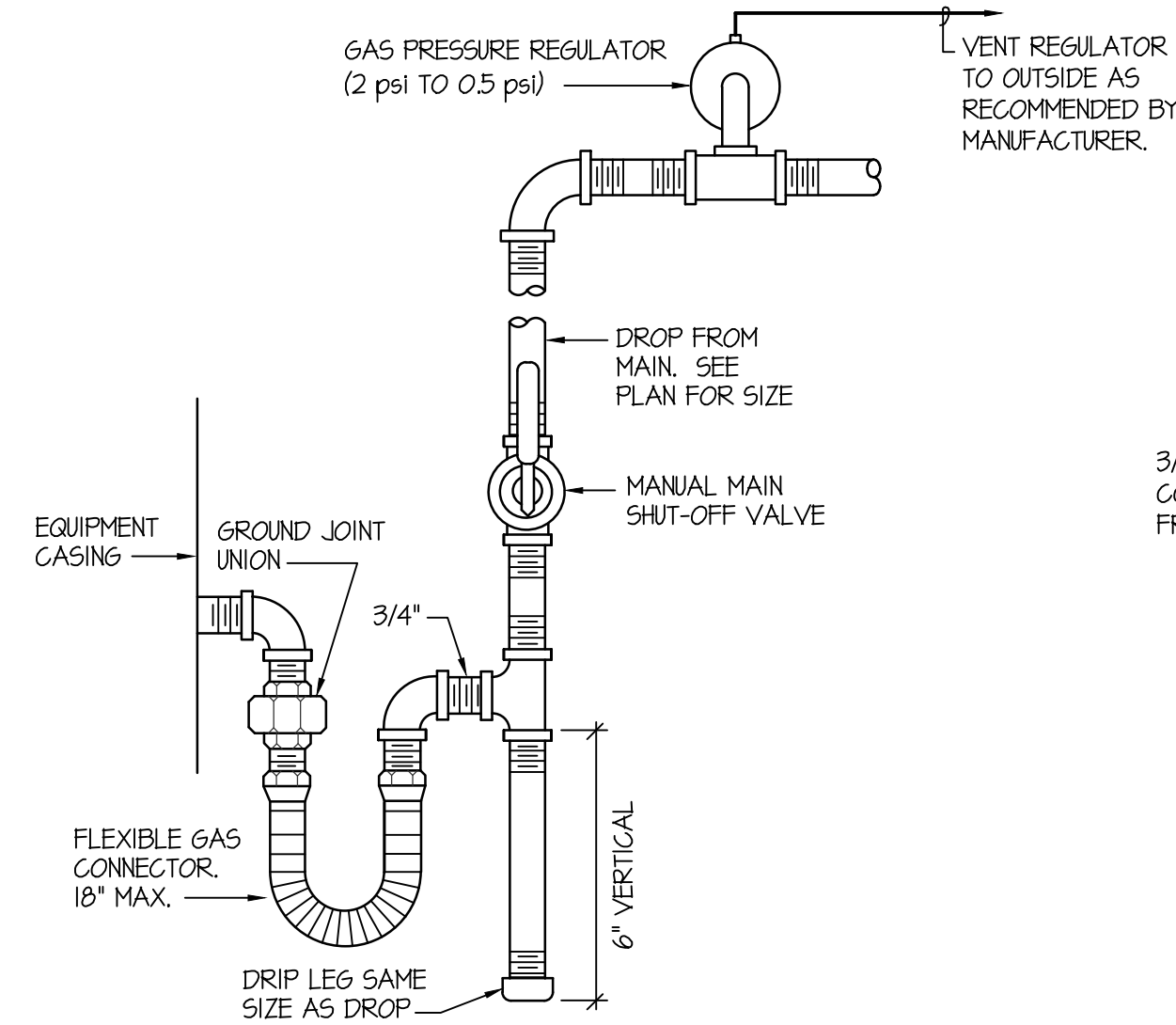


- NOTES:
- 1 - ALL WATER PIPING INSTALLED UNDERFLOOR SHALL BE TYPE "K" COPPER
 - 2 - WATER PIPE INSULATION ON UNDERFLOOR PIPING SHALL BE ARMAFLEX 3/4" THICK RUBBER PIPE INSULATION. TAPE INSULATION AT ALL SEAMS.
 - 3 - MINIMUM PIPE SIZE UNDERFLOOR SHALL BE 3/4"
 - 4 - SAND FILL AROUND PIPING SHALL BE A MINIMUM OF 4" THICK. MATERIAL SHALL BE HAND TAMPED, RODDED OR LIGHTLY COMPACTED DURING INSTALLATION. CARE SHOULD BE TAKEN NOT TO DEFORM OR OTHERWISE DAMAGE PIPING OR INSULATION.

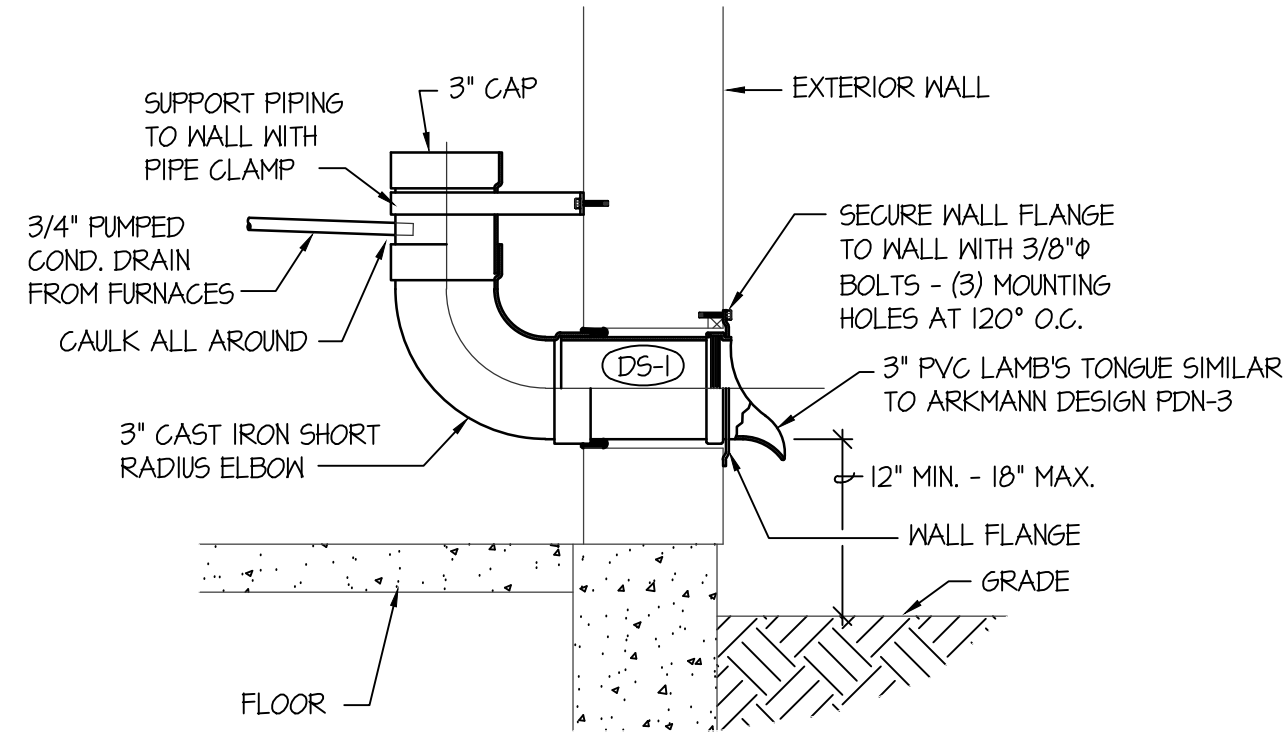
UNDER SLAB PIPE INSTALLATION DETAIL
NO SCALE



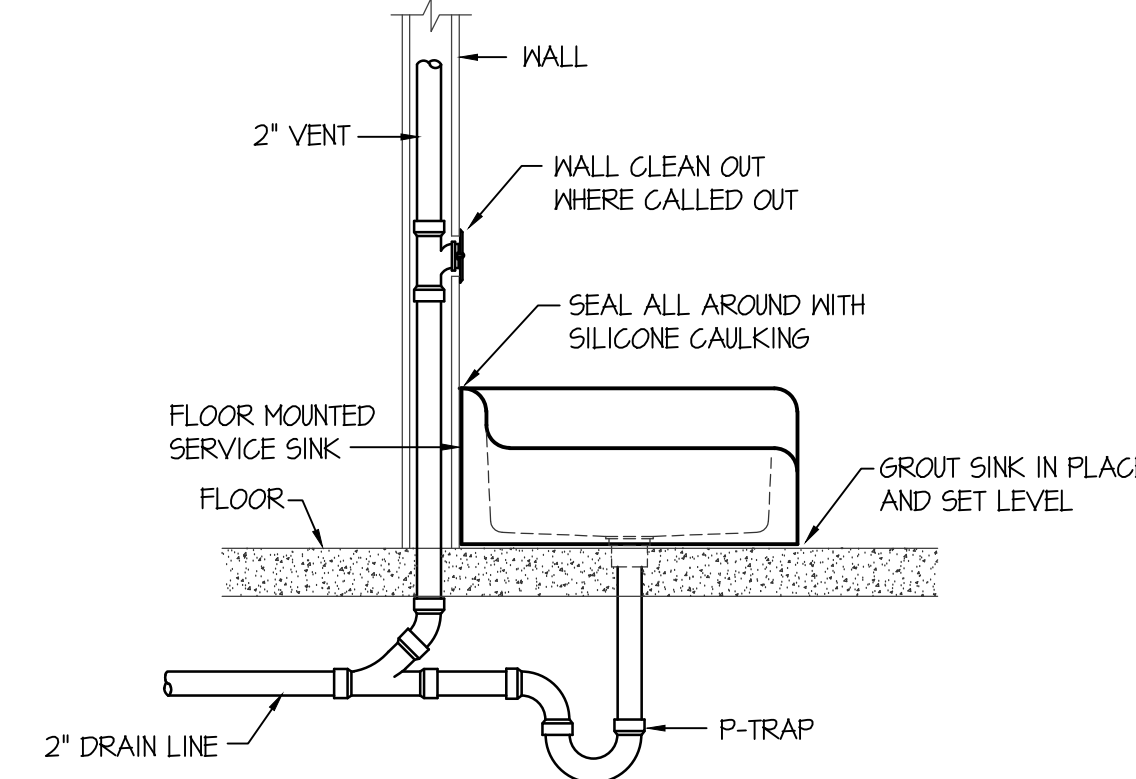
CLUBHOUSE WATER HEATER PIPING DIAGRAM
NO SCALE



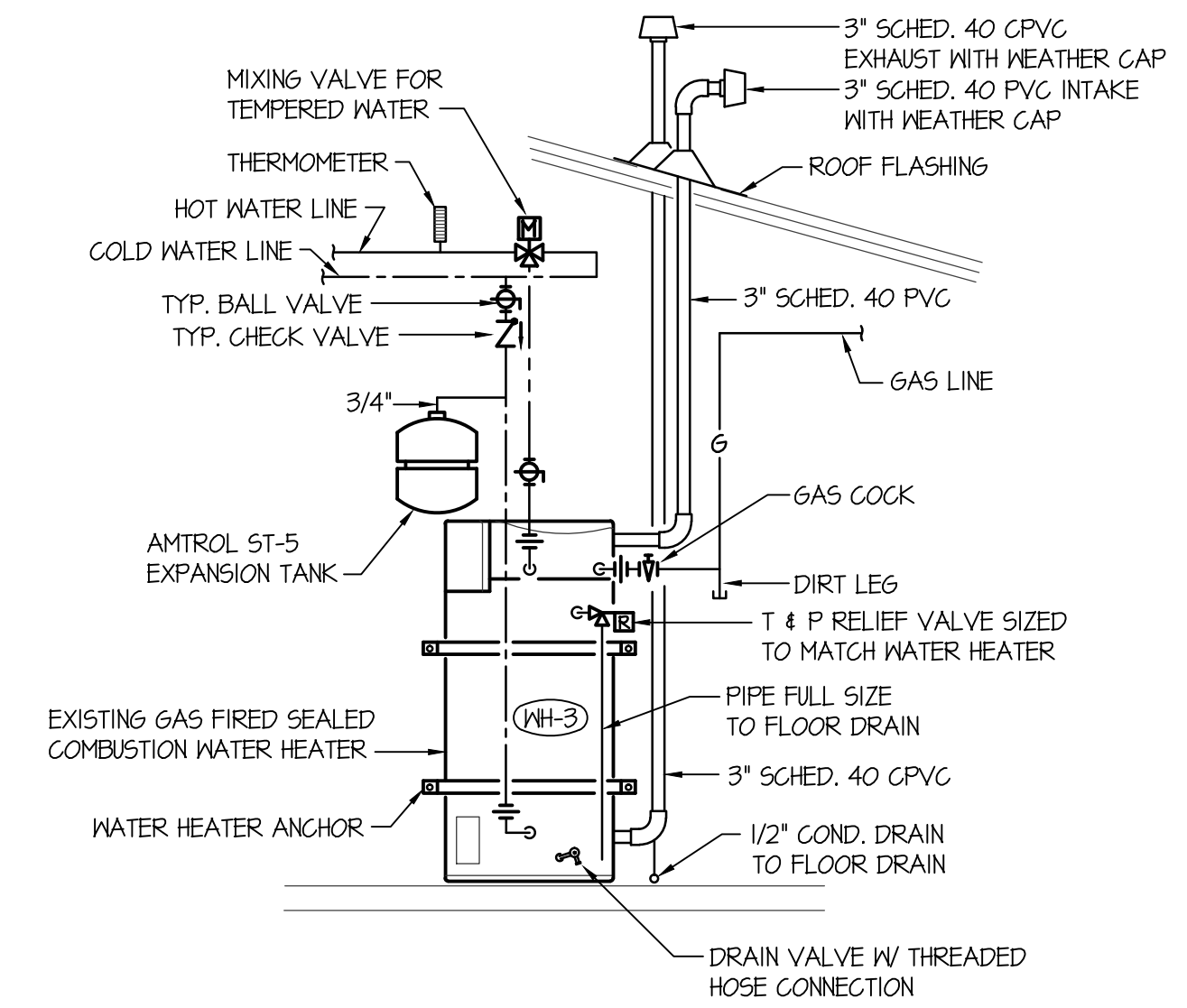
GAS LINE CONNECTION DETAIL
NO SCALE



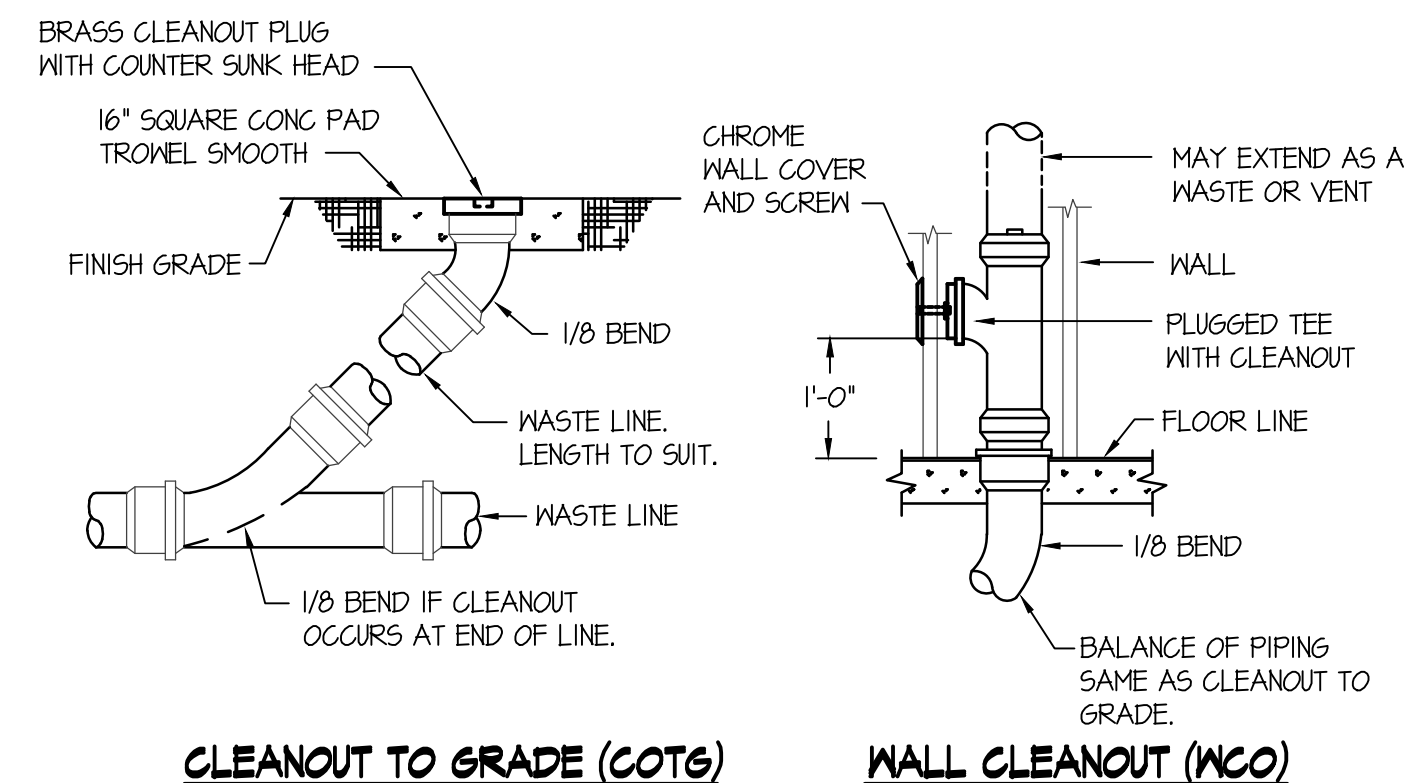
FURNACES F-5a & F-5b CONDENSATE DRAIN DETAIL
NO SCALE



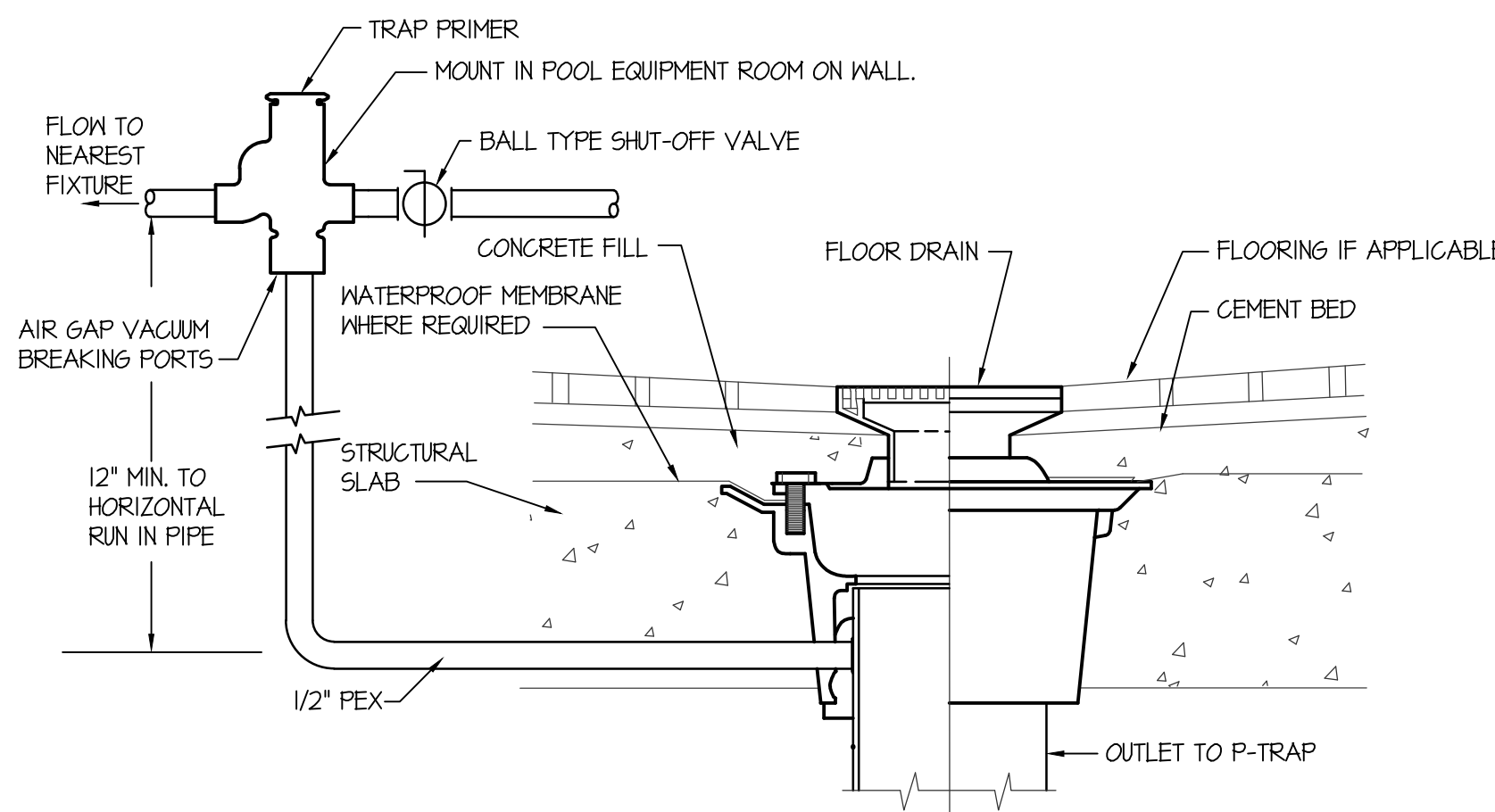
SERVICE SINK INSTALLATION DETAIL
NO SCALE



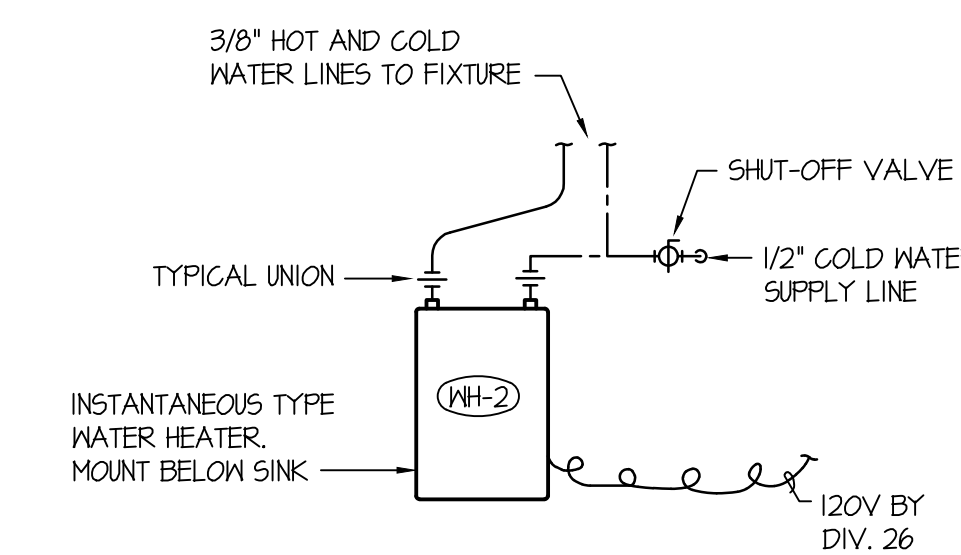
POOL HOUSE GAS FIRED WATER HEATER PIPING DIAGRAM
NO SCALE



CLEAN OUT DETAILS
NO SCALE



TRAP PRIMER DETAIL
NO SCALE



TANKLESS WATER HEATER PIPING DETAIL
NO SCALE



Engineered Systems Associates
Mechanical Engineers

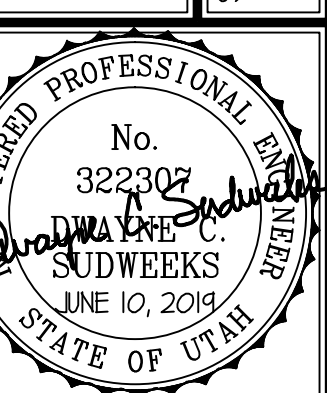
Dwayne Sudweeks
1355 East Center - Pocatello, Idaho 83201
Phone: (208) 233-0501 Fax: (208) 233-0529 email: esa@engsystems.com

STRATA CLUBHOUSE

LOGAN, UTAH

PLUMBING DETAILS

PROJECT:



DRWN. BY:	SR	CKD. BY:	DCS
JOB NO.	18043	DATE:	JUNE 2019

SHEET: **P-2**
OF: THREE